

Office to let

Filipescu Office Building

Bucharest, Sector 2, 39-41 Nicolae Filipescu st.



Building information

Building status	Existing
Year of construction	2004
Total building area	5 185 sq m

Commercial terms

Office space*	after login *
Service charge*	after login *
Minimum lease term	after login *
Availability	after login *

* Asking terms for m²/month

Location



Available space

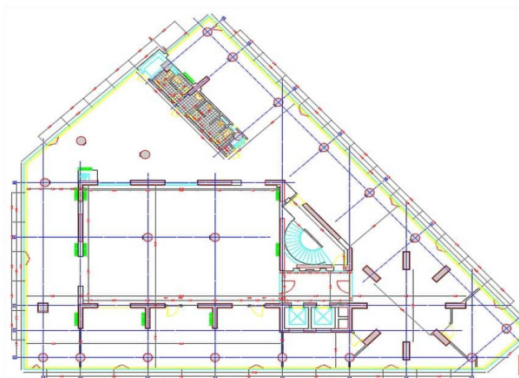
807 sq m

Available office space

325 sq m

Minimum office space

Typical floor plan



Available space

Floor	Vacant space	Availability
0 **	please contact us *	please contact us *
4	please contact us *	please contact us *
Total	after login *	

(**) Office-retail space

Public transport

Metro: M2

Bus: 361, 381, N113, N117

Contact



+40 21 302 3400

More information